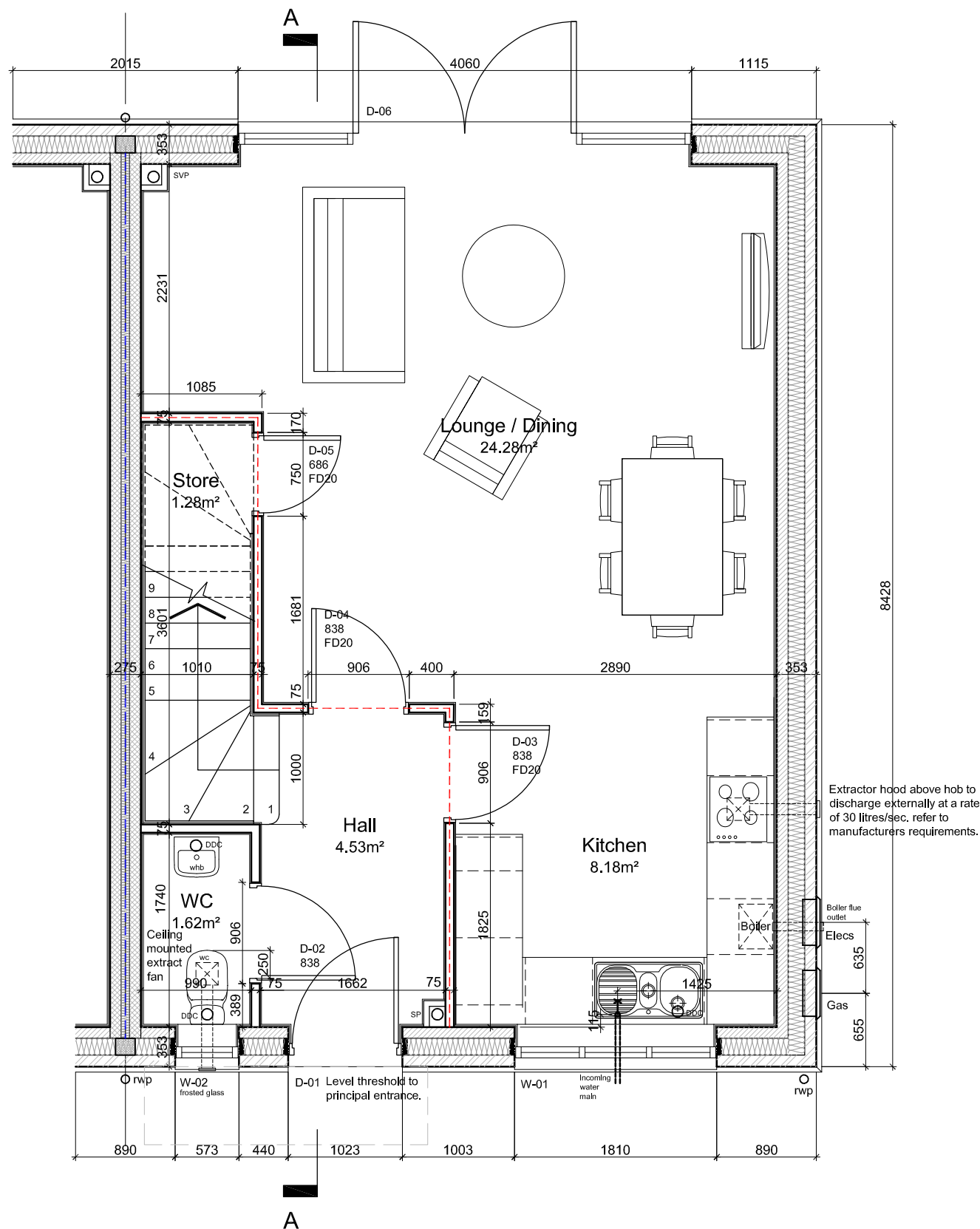
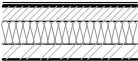
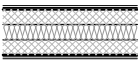


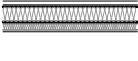










IMPORTANT NOTE!
 THIS DRAWING TO BE READ IN CONJUNCTION WITH ALL CALDERPEEL PLANS, SECTIONS, ELEVATIONS, SPECIFICATION NOTES AND DETAILS TOGETHER WITH ALL CONSULTANT'S INFORMATION INCLUDING STRUCTURAL ENGINEER, MECHANICAL ENGINEER AND HOME AUTOMATION SPECIALIST.



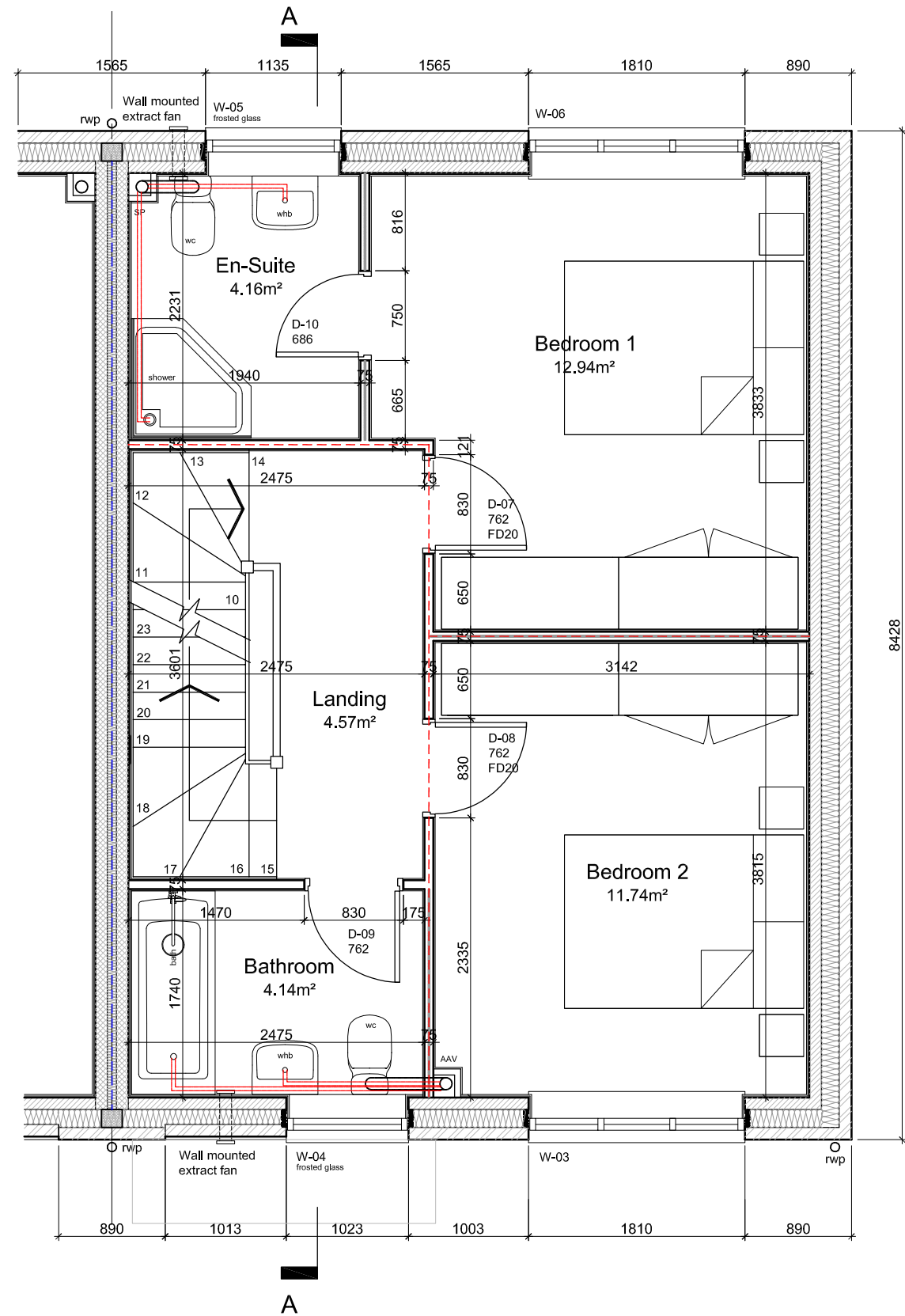
Wall Type Key

-  102.5mm external leaf brick 150mm cavity with full fill Rockwool Roll 100mm Medium dense concrete blockwork internal leaf 12.5mm plasterboard on dabs with plaster skim finish
-  12.5mm plasterboard on dabs with plaster skim finish on both sides 100mm blockwork cavity party wall with a density between 1350 to 1600 kg/m³ 75mm cavity with full fill Superglass Party Wall Roll 100mm Medium dense concrete blockwork internal leaf 12.5mm plasterboard on dabs with plaster skim finish.
-  ex75x50mm sw studs with 15mm plasterboard with plaster skim finish both sides
-  ex75x50mm sw studs with 25mm Isover acoustic partition roll 15mm plasterboard with plaster skim finish both sides
-  12mm thick Cedral Click fibre cement T&G board on ex25x50mm sw battens on breather membrane on 12mm Promat Supalux board on ex100x50mm plus 100mm thick Kingspan K107 Insulation. 12mm Promat Supalux board Internally 40mm insulation board, Vapour control layer with 12.5mm plasterboard with plaster skim finish
-  1 hour Fire Protection
-  1/2 hour Fire Protection
-  1 Hour Fire Resistant Cavity Barrier
-  Air Brick Location for Under Floor Ventilation
-  DDC Direct waste connection to drain
-  SVP Soil and Vent pipe drain
-  RWP Rain water pipe
-  MJ Movement Joint

Proposed Ground Floor Plan

REV	DESCRIPTION	DATE	DRAWN
A	Tender Issue	27-05-22	SC
B	Drainage runs added for wc/whb/showers	21-06-22	SC

IMPORTANT NOTE!
 THIS DRAWING TO BE READ IN CONJUNCTION WITH ALL CALDERPEEL PLANS, SECTIONS, ELEVATIONS, SPECIFICATION NOTES AND DETAILS TOGETHER WITH ALL CONSULTANT'S INFORMATION INCLUDING STRUCTURAL ENGINEER, MECHANICAL ENGINEER AND HOME AUTOMATION SPECIALIST.

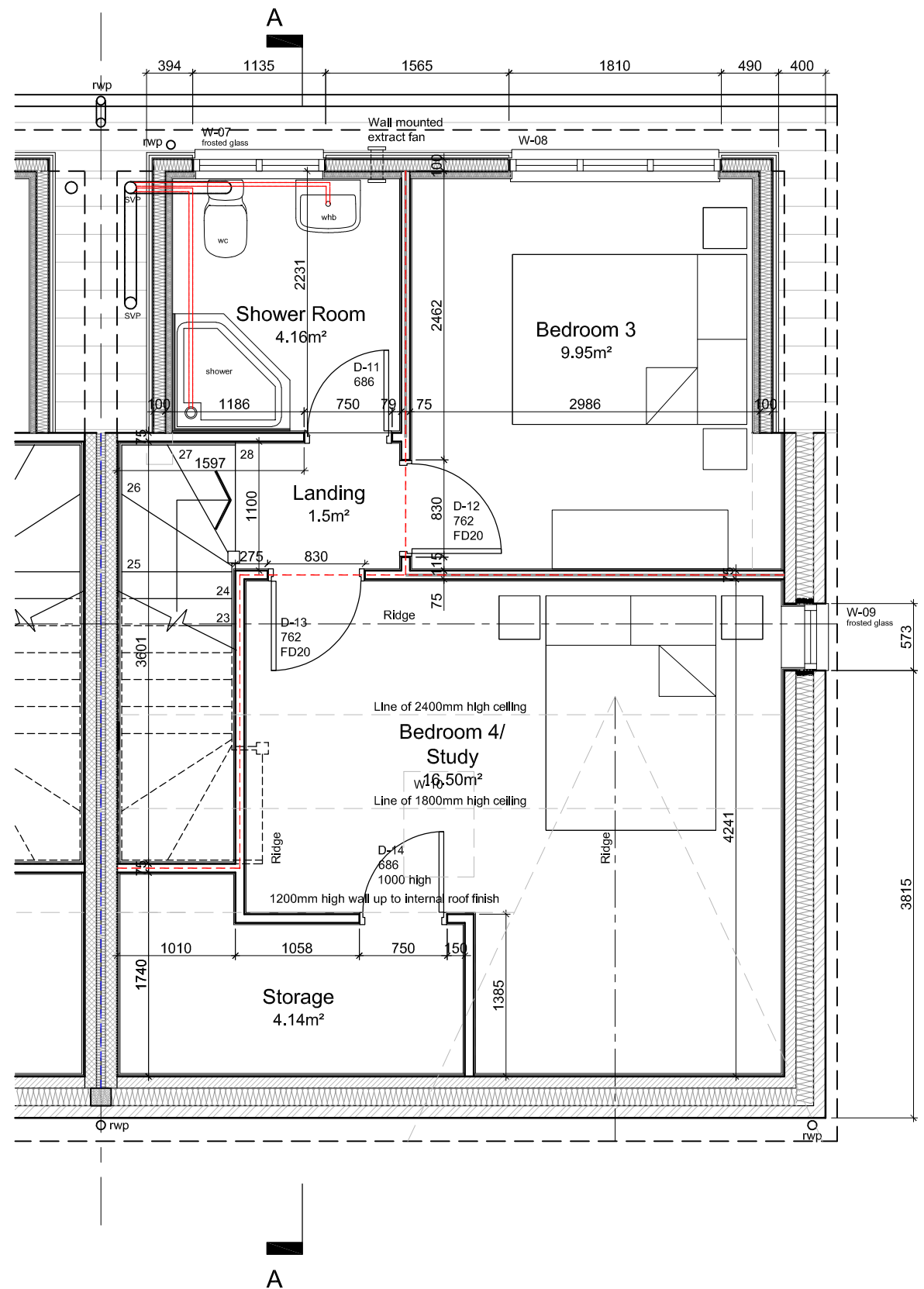


- Wall Type Key**
- 102.5mm external leaf brick 150mm cavity with full fill Rockwool Roll 100mm Medium dense concrete blockwork internal leaf 12.5mm plasterboard on dabs with plaster skim finish
 - 12.5mm plasterboard on dabs with plaster skim finish on both sides 100mm blockwork cavity party wall with a density between 1350 to 1600 kg/m³ 75mm cavity with full fill Superglass Party Wall Roll 100mm Medium dense concrete blockwork Internal leaf 12.5mm plasterboard on dabs with plaster skim finish.
 - ex75x50mm sw studs with 15mm plasterboard with plaster skim finish both sides
 - ex75x50mm sw studs with 25mm Isover acoustic partition roll 15mm plasterboard with plaster skim finish both sides
 - 12mm thick Cedral Click fibre cement T&G board on ex25x50mm sw battens on breather membrane on 12mm Promat Supalux board on ex100x50mm plus 100mm thick Kingspan K107 insulation, 12mm Promat Supalux board internally 40mm insulation board, Vapour control layer with 12.5mm plasterboard with plaster skim finish
 - 1 hour Fire Protection
 - 1/2 hour Fire Protection
 - 1 Hour Fire Resistant Cavity Barrier
 - Air Brick Location for Under Floor Ventilation
 - DDC Direct waste connection to drain
 - SVP Soil and Vent pipe drain
 - RWP Rain water pipe
 - Movement Joint

Proposed First Floor Plan

REV	DESCRIPTION	DATE	DRAWN
PL	Front gate handed to right hand side of elevation.	04-05-22	SC
A	Tender Issue	27-05-22	SC
B	Drainage runs added for wc/whb/showers	21-06-22	SC

IMPORTANT NOTE!
THIS DRAWING TO BE READ IN CONJUNCTION WITH ALL CALDERPEEL PLANS, SECTIONS, ELEVATIONS, SPECIFICATION NOTES AND DETAILS TOGETHER WITH ALL CONSULTANT'S INFORMATION INCLUDING STRUCTURAL ENGINEER, MECHANICAL ENGINEER AND HOME AUTOMATION SPECIALIST.

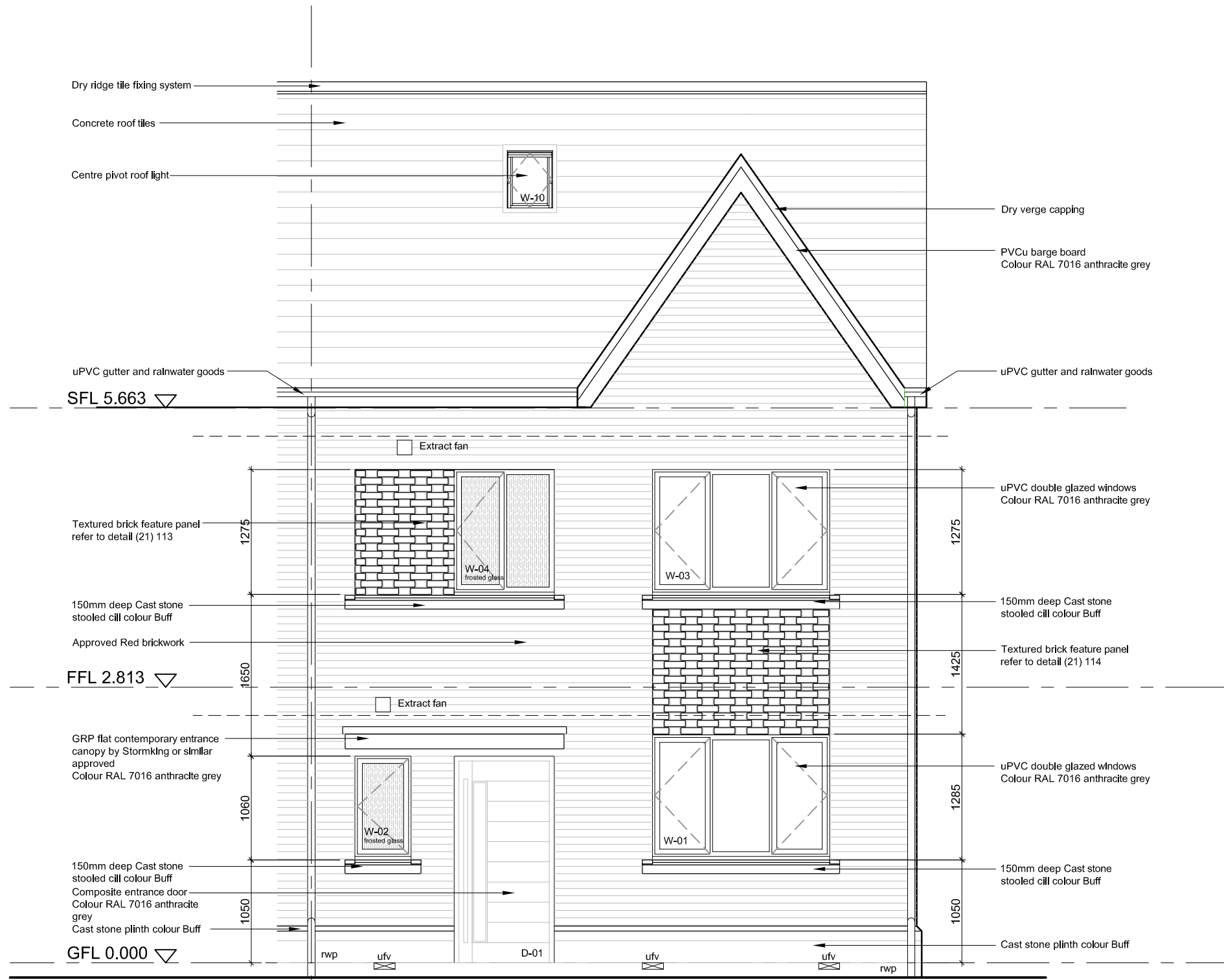


- Wall Type Key**
- 102.5mm external leaf brick 150mm cavity with full fill Rockwool Roll 100mm Medium dense concrete blockwork internal leaf 12.5mm plasterboard on dabs with plaster skim finish
 - 12.5mm plasterboard on dabs with plaster skim finish on both sides 100mm blockwork cavity party wall with a density between 1350 to 1600 kg/m³ 75mm cavity with full fill Superglass Party Wall Roll 100mm Medium dense concrete blockwork internal leaf 12.5mm plasterboard on dabs with plaster skim finish.
 - ex75x50mm sw studs with 15mm plasterboard with plaster skim finish both sides
 - ex75x50mm sw studs with 25mm Isover acoustic partition roll 15mm plasterboard with plaster skim finish both sides
 - 12mm thick Cedral Click fibre cement T&G board on ex25x50mm sw battens on breather membrane on 12mm Promat Supalux board on ex100x50mm plus 100mm thick Kingspan K107 insulation. 12mm Promat Supalux board internally 40mm insulation board. Vapour control layer with 12.5mm plasterboard with plaster skim finish
 - 1 hour Fire Protection
 - ½ hour Fire Protection
 - 1 Hour Fire Resistant Cavity Barrier
 - Air Brick Location for Under Floor Ventilation
 - Direct waste connection to drain
 - Soil and Vent pipe drain
 - Rain water pipe
 - Movement Joint

Proposed Second Floor Plan

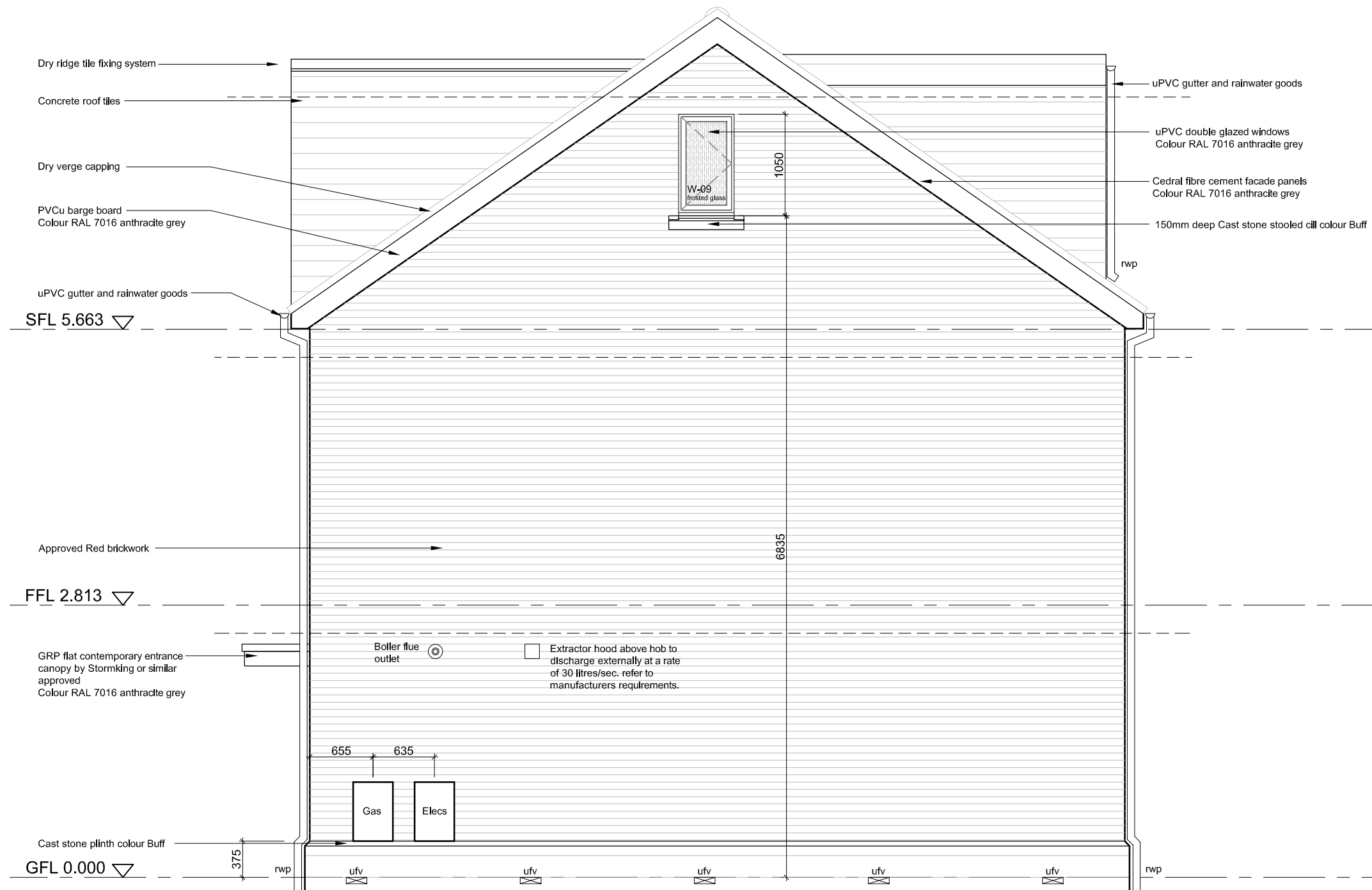
REV	DESCRIPTION	DATE	DRAWN
P1	Front gable handed to right hand side of elevation.	04-05-22	SC
A	Tender Issue	27-05-22	SC

IMPORTANT NOTE!
 THIS DRAWING TO BE READ IN CONJUNCTION WITH ALL CALDERPEEL PLANS, SECTIONS, ELEVATIONS, SPECIFICATION NOTES AND DETAILS TOGETHER WITH ALL CONSULTANT'S INFORMATION INCLUDING STRUCTURAL ENGINEER, MECHANICAL ENGINEER AND HOME AUTOMATION SPECIALIST.



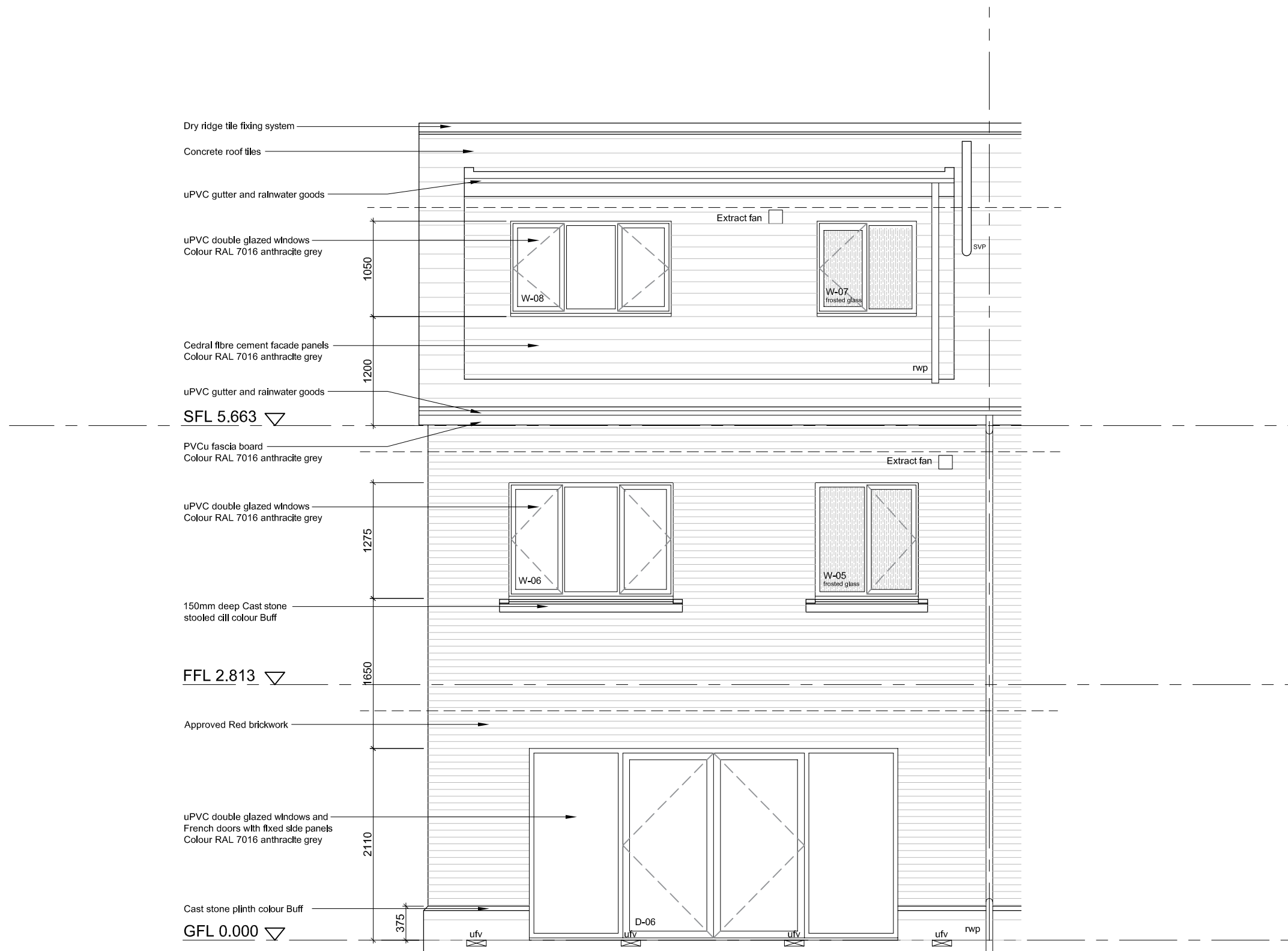
Front Elevation

IMPORTANT NOTE!
 THIS DRAWING TO BE READ IN CONJUNCTION WITH ALL CALDERPEEL PLANS, SECTIONS, ELEVATIONS, SPECIFICATION NOTES AND DETAILS TOGETHER WITH ALL CONSULTANT'S INFORMATION INCLUDING STRUCTURAL ENGINEER, MECHANICAL ENGINEER AND HOME AUTOMATION SPECIALIST.



Side Elevation

IMPORTANT NOTE!
 THIS DRAWING TO BE READ IN CONJUNCTION WITH ALL CALDERPEEL PLANS, SECTIONS, ELEVATIONS, SPECIFICATION NOTES AND DETAILS TOGETHER WITH ALL CONSULTANT'S INFORMATION INCLUDING STRUCTURAL ENGINEER, MECHANICAL ENGINEER AND HOME AUTOMATION SPECIALIST.



Rear Elevation